



**CHRISTIAN  
LIFE COMMUNITY  
SOUTH AFRICA**

**May 2019**

# MASITHETHE

## CLC EDUCATION SUPPORT

### **An update from Colleen, who heads us the “Education Support” portfolio on National Exco:**

CLC members and groups continue to support Education initiatives. The CLC Student group in Cape Town tutor high school pupils, while the Kommetjie group assists with providing text books and library books to rural Catholic schools. CLC Eastern Cape also actively supports education. In East London, CLC Members assist with student accommodation at the Khetha Ubomi house in the Quigney; in Grahamstown the CLC group collects stationary for school pupils, and have initiated a Food Support programme for students. CLC Port Elizabeth assists pupils at schools supported by the Masinyusane Trust with toiletries; while students at Walmer High receive donations of stationary from CLC members, and Colleen and Margot prepared ten pupils from the school for the National English Olympiad, while the CLC National Education fund assisted with the Entrance Fees for this exam for these pupils. Gauteng members of the Holy Trinity group tutor pupils at the Bophelo Impilo Community Private School.

**“Education support is a priority in our mission, in response to the challenges faced by all families, but in particular by poverty-stricken people in South Africa. We commit ourselves in our regions to continue an openness in exploring ways of support...”**

**CLC National Assembly 2017**

### **Applying for support from the education fund.**

Remember that we have a small education fund to support CLC groups in starting out on new education support projects. If your group would like to apply please take note of the procedure and criteria below:

Any requests for financial assistance from the CLC National Education Project Fund are subject to approval by the National Exco, and considered against the following criteria:

When financial support is given from the CLC Education Support Fund, that support

- Needs to be in response to a formal application to the National Exco
- Needs to contribute to a project which has a definite beginning date and an end-date
- Needs to make difference to the direct education needs of the beneficiary
- Needs a form of direct involvement by a CLC Member/ a CLC Group members
- Needs to be supported by a financial contribution (raised through a fundraising effort) by the local CLC group involved in the project. This will enable the CLC Education Support Fund to remain fed and sustainable.
- Needs to be approved by the National Exco before CLC involvement in the project begins, and needs to be reviewed by the National Exco once the project has been completed.

## SLEEPING BAGS FOR HOMELESS PEOPLE

Members of CLC Port Elizabeth invited members of the SVdP group and other parishioners from St Augustine's Cathedral to join them in making Sleeping Bags for Homeless people. The sleeping bags are made from newspaper, recyclable 60-micron plastic bags, according to a pattern created by the Claremont Rotary Club.



Above: Sue (CLC), Ronald, Clara (CLC), and Anthony.

Below: Jacques and Hedwig (CLC)



CLC Gauteng served three tables at the Holy Trinity Easter Lunch for the Homeless. It was a joyful way to celebrate Easter together.

## HAPPY 90<sup>TH</sup> BIRTHDAY VINCENT

Vincent Sandford (CLC Port Elizabeth) has been a member of CLC South Africa since the early days, and he and his late wife, Jeanette, were both loyal members of CLC in Grahamstown and Port Elizabeth. Vincent turns 90 on 15 May. On 8 May, members of CLC Nazareth, Port Elizabeth, celebrated Vincent's 90<sup>th</sup> Birthday after their meeting.



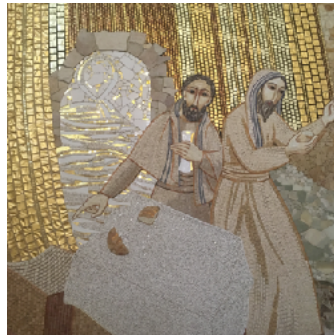
Margot and Vincent



Sue, Clara, Colleen, Vincent, Denise, Astri and Kaye

Western Cape CLC is tentatively exploring an opportunity for a retreat at Swellendam this winter, depending on participants and director availability. Possible dates are: 23 June to 29 June and 30 June to 6 July 2019.

If you are interested and would like to be kept up to date with plans, please contact Jill McKay (083 2826763 or [jillandroydmckay@gmail.com](mailto:jillandroydmckay@gmail.com)).



The National Exco hopes you all had a blessed Easter celebration, and that you continue to enjoy the fruits of this most joyful Easter season!

## Community Banking Details

### National Account

CLC National Secretaries  
Standard Bank, Newton Park.  
Branch Code: 050017  
Acc No: 004874625

### Education Project Account

CLC National Secretaries  
Standard Bank, Newton Park.  
Branch Code: 050017  
Acc No: 044323921

### Eastern Cape

Christian Life Community EC  
Nedbank, Savings Account  
Acc No: 2447009798

### Gauteng

Christian Life Communities  
ABSA, Savings Account  
Acc No: 630465901

### Western Cape

CLC Western Cape  
Nedbank, Savings Account  
Acc No: 2250025088